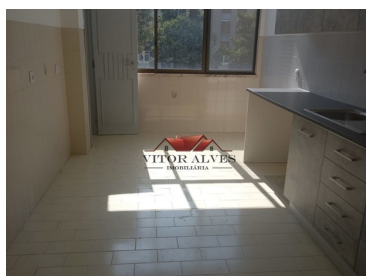





## Pinhal Novo - Apartment



 1  
Bedrooms

 1  
Bathrooms

 64,07  
Area (m²)



**125 000 €**  
(EUR €)

### 1 bedroom apartment well located in Pinhal Novo

1 bedroom apartment in Pinhal Novo.  
Close to commerce, transport and school.

Property composed of:

- Bedroom;
- Living room;
- kitchen;
- Sanitary Installation.

Location:

Pinhal Novo is a city in Portugal situated on the Setúbal Peninsula, halfway between Lisbon and



**Vitor Alves**

966 148 321 <sup>2</sup>

vitor.alves@vaimobiliaria.pt

**T +351 212 380 191 <sup>1</sup> · T +351 926 060 833 <sup>2</sup> · E geral@vaimobiliaria.pt**  
**Rua João Posser de Andrade Vilar nº 124 r/c Direito 2955-199 Pinhal Novo**  
**AMI 21038**

<sup>1</sup> (Call to national fixed network) | <sup>2</sup> (Call to national mobile network)



Setúbal. It is a parish of the Municipality of Palmela.

It is served by two motorways connecting Lisbon to the South and by the railway station that allowed residents to connect directly to the Lisbon metro network in 38 minutes. It is located near the Arrábida Natural Park and many of its facilities, such as shopping centres.

The city is undergoing continuous growth and has expanded from a small village a few years ago to a planned city that benefits from a new infrastructure and urbanization plans do not allow for large constructions, which contributes to a certain quality of life.

Contact us by phone or fill out the form and we will contact you.

## Property Features

- Built year: 1992
- Floors: 1
- Energetic certification: E



**Vitor Alves**

966 148 321 <sup>2</sup>

vitor.alves@vaimobiliaria.pt

**T +351 212 380 191 <sup>1</sup> · T +351 926 060 833 <sup>2</sup> · E geral@vaimobiliaria.pt**  
**Rua João Posser de Andrade Vilar nº 124 r/c Direito 2955-199 Pinhal Novo**  
**AMI 21038**

<sup>1</sup> (Call to national fixed network) | <sup>2</sup> (Call to national mobile network)